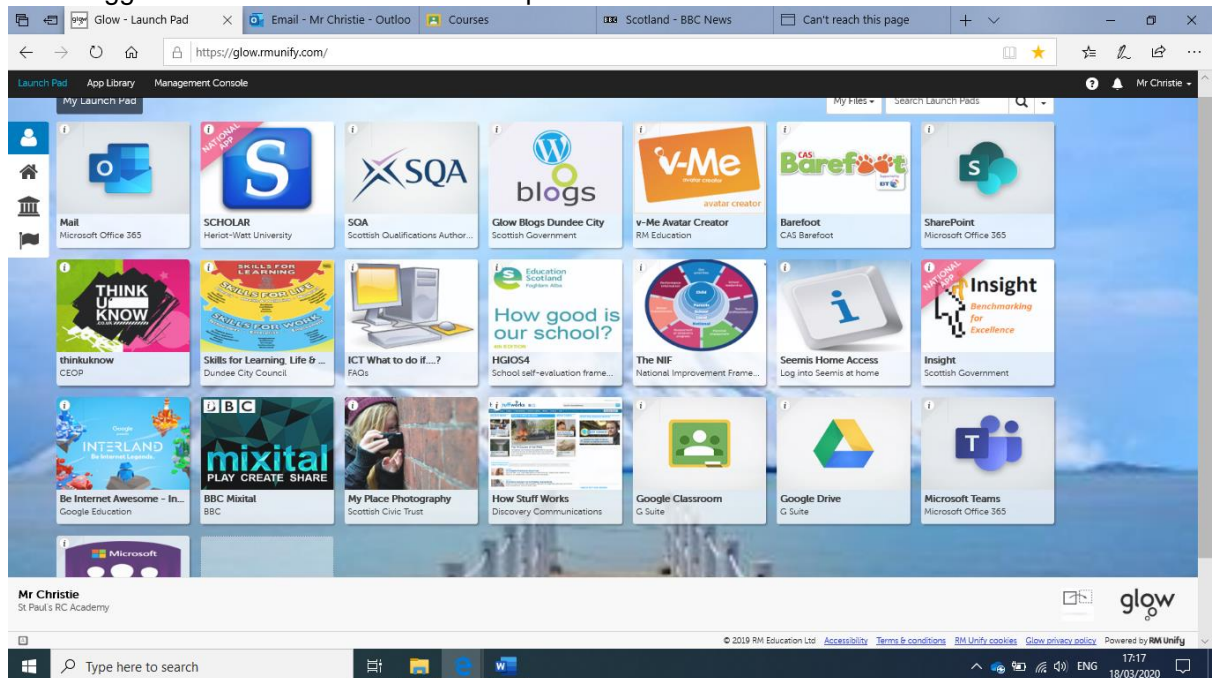


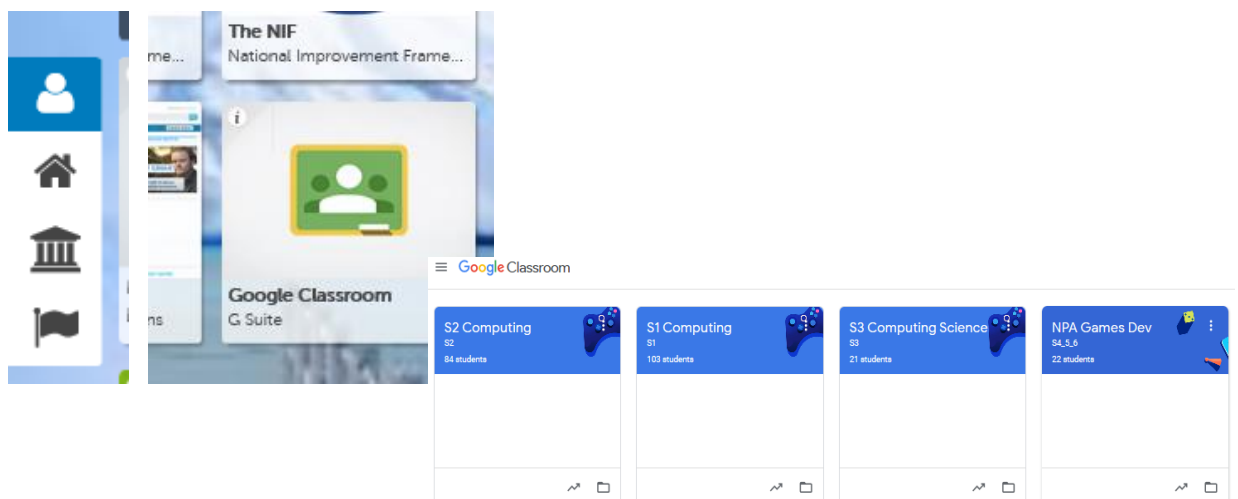
Logging into Glow and Google Classroom:

1. Web address - <https://glow.rmunify.com/>
2. Username will be school network username with a dd in front. For Junior this will be - DDjhealy1
3. Junior will be asked to reset his password
4. Once logged in Junior will see the Launchpad:



Junior's will look different to mine because I have customised mine.

5. If Junior clicks on the Home icon down the left hand side and scrolls through the tiles/apps she will see a tile for Google Classroom. If he clicks on it and agrees to the terms he will see that staff have set up some classes which they might use to set work for pupils



6. Back on the launchpad there is a tile for Outlook, which will let Junior use e-mail and access the Office 365 apps such as Word, PowerPoint etc... from his device at home. Junior's e-mail address will be - DDjhealy1@glow.sch.uk