

8. The pneumatic circuit shown in Figure Q8 is used to test the life span of a chair.

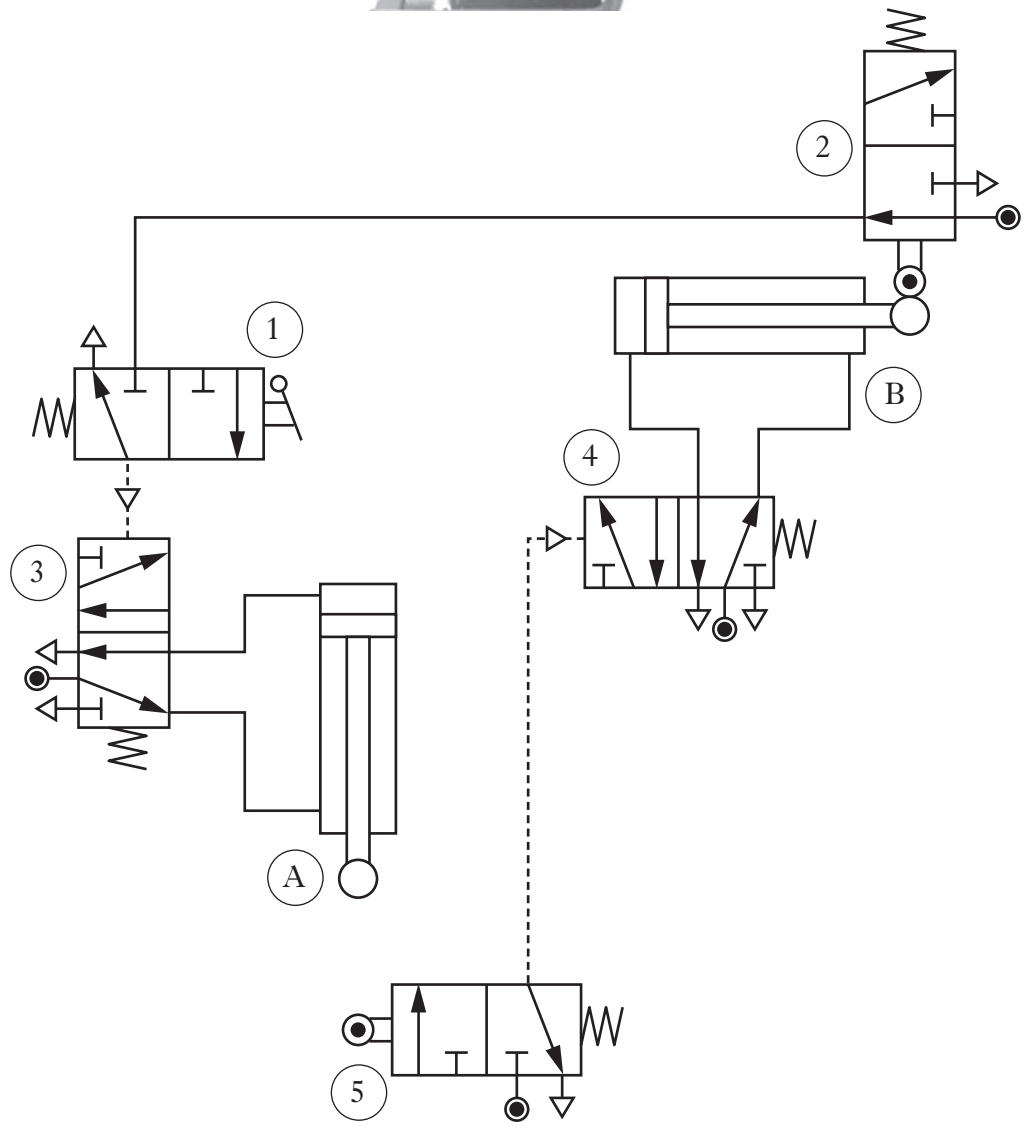


Figure Q8

Marks

8. (continued)

(a) State the **full** name of the following pneumatic components.

Valve (1) _____

Valve (3) _____

2

(b) Describe, with reference to Figure Q8, the operation of the pneumatic circuit.

Valve (1) is actuated _____

5
(7)

[END OF SECTION A]

[Turn over

11. (continued)

Marks

Figure Q11(b) shows the pneumatic circuit that is used to operate the water gates which control the flow of water through the power station.

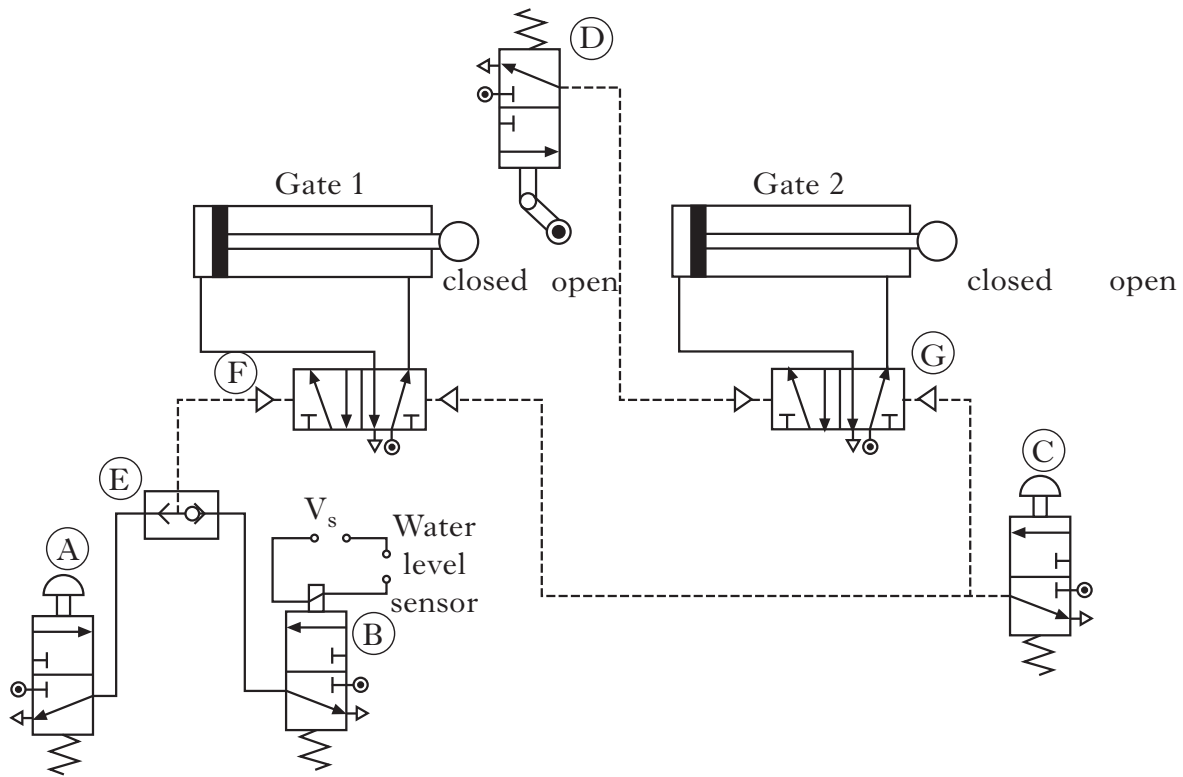


Figure Q11(b)

(c) Describe, using appropriate terminology, how the pneumatic circuit operates.

When the water level sensor produces a high signal, valve (B),

5

[Turn over